



CHAPEL UPDATE MEMORIALIZATIONS

More than twenty years ago, a sacred dream began to take shape in Richmond, NH. Through the centuries, certain people have been privileged to participate in similar inspirations from God. Their names were engraved generations ago in the sacred

Sr. Maria Philomena, M.I.C.M.

shrines around the world. And, following their personal inspirations to be generous in a holy endeavor, they drew out of obscurity the greatest artists of all time to leave a memory of their gifts from God in stone, gold, glass, and wood. Not everyone has had the opportunity to help rebuild and build up our Holy Mother the Church in a lasting and visible way.

Imagine your name engraved on one of the ancient doors of the old basilica of Our Lady of Guadalupe in Mexico City. The person who, centuries ago, gifted those doors to that sacred Marian shrine must have had incredible faith and vision to give

a gift in their present day that would build up the Church for centuries. Many of the persons who helped to turn those sacred dreams into visible edifices never set foot within those holy walls.

Dear Reader, what is in your heart? Is the crisis in the Church and the consequent catastrophe in the world, especially our own country, something you have hope to change? The Faith that is in jeopardy today is the same Faith that built the shrines of Christendom. Do you think that it was only the wealthy and prosperous in faith-filled days that built those



A special privilege to get pictures of the installed bell rope. Sister is grateful that her vocation does not require constant work on precarious heights!



Above: The back hallway is insulated.

Below: The same hallway—now dry-walled and painted.



Above: Completely snowed in — a backhoe was needed to help dig out the driveway. Below: The roof is ready for its cap (bird's eye view).





The angels on this page are the preliminary sketches for the angels on the back wall.

shrines we know and love around the world? Those who built the shrines had the Faith that we claim to want to restore in the Church. Instead of placing their hopes in material

items and being stingy with God, they placed their material possessions in their hopes to build up the Faith incarnationally. In this way, they strengthened the Faith and drew others to the Church by the means that Saint Thomas Aquinas says is necessary: *Nihil est in intellectu, nisi prius fuerit in sensu.* ("Nothing is in the intellect unless it was first in the senses.")

The Faith that comes through beautiful, sensible things is what effectively takes up its abode in the minds and hearts of men. Rejecting the modernist cult of the ugly, we know that we need beauty in our liturgy to draw us and others to God. Building a beautiful church for God is an expression of the triumphalism that we have in our hearts. The Faith is not dead. And, as generous Catholics sent their pennies and dollars to the heart of Christendom to build up the common edifice of the Faith in the past, you now have the opportunity to contribute your pennies and dollars to this more humble, yet beautiful, monument to Our Lady's Crusade and prelude to the Triumph of her Immaculate Heart.

There now stands, in Richmond, NH, a sturdy building clad with a roof and siding. Atop this building is a cupola housing a beautiful bronze bell from 1869 (the year the first Vatican Council convened). We still need the altar, furnishings, and artwork to make this tiny edifice into a jewel for the Mother of God which will draw her children's hearts heavenwards and hasten the Triumph of her Immaculate Heart.



We have the funds from the loan to purchase these gates and railing but not to install them. The memorialization of these items will make it possible to keep moving forward.



— \$750,000

— \$500,000

— \$300,000

— \$100,000

\$476,630 raised to date!

The first gift that Our Lady inspired among her children for this chapel was from hearts enlarged by grief and loving faith. The tragic death of a young man, a son, called forth the faith and generosity of his family and friends.

Soon the sun will shine into this little chapel through an image of Our Lady of Guadalupe and Saint Juan Diego as a tribute to the love and faith of this young

man's family and friends. This young man, who died in the loving embrace of his Mother's brown scapular, will be remembered perpetually in our house of prayer.

Every gift is welcome. Every penny counts. Your name will be put in a chest under Our Lady's shrine to be perpetually remembered. Sacred artwork and furnishings in the chapel are available to bear your name or the names of your loved ones — anywhere from the gold stars on the ceiling to the sacred altar itself. Prayerfully consider the opportunity Our Blessed Mother is offering to you now.

After you have spoken to your Mother and your Queen and have listened to her, please contact me at (603) 239-6495 or smph@catholicism.org so that I can help you in giving a gift to her. Thank you!

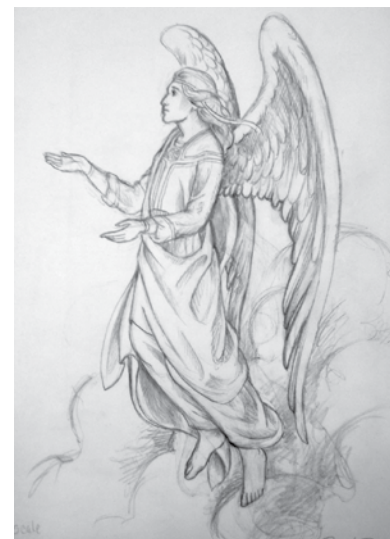
continued on page 14



The two angels with censers will go on either side of the Sacred Heart statue. The third is for the Benefactors' Wall. All three are currently still available for memorialization.



Like Saint Thérèse, your name can be written in the stars! Each ceiling star can be memorialized — think ahead for birthday and anniversary gifts!



The memorialization list can also be found on-line at ora.catholicism.org. Some items are time-sensitive or critical for the first Mass.

HONORING OUR LADY

THE MOST IMPORTANT MEMORIALIZATIONS

From our list of items to be memorialized in the new chapel, here are the most time-sensitive. For a complete list, go to ora.catholicism.org/memorialisations. The prices includes the item, its restoration and installation, a plaque, and a donation toward the chapel.

Altar

Green, white, and black marble—this altar was salvaged from a hospital chapel in Massachusetts. It needs a few repairs, a masonry sub-structure, and to be re-assembled. (\$8000)

Stations of the Cross

Donated by the Brothers of Reconciliation, the lovely bas-relief Stations need frames and a little touch-up. (\$3000 each)

Of the twenty-two **windows**, five are reserved. (\$600-\$1300 each – see list)

Tuy Vision Mural

The pièce de résistance of our chapel will be the large painting of Sister Lucia dos Santos' June 1929 vision, when Our Lady returned to her to ask for the consecration of Russia. The vision is Trinitarian, Eucharistic, and Marian, although Our Lady will have a statue on the side altar instead of her being in the painting under the arms of the cross. It is a perfect symbol for our crusade. (\$42,000)

Altar Rail

We found a beautiful oak rail, slightly curved, that would fit well in our chapel. It needs to be stained, adjusted, and installed. (\$4000 each side)

Tabernacle

A strong, very masculine silver and gold tabernacle (RESERVED)

Tabernacle Veils

We can start with a gold one, but then we need a full set in all the liturgical colors. (price still to be determined)



The artistic 3-D rendering of the chapel was made by Owen Carson.

Side Shrine - Our Lady

A hand-carved oak statue, custom-made in Portugal by Mr. Thedim, the son of the sculptor who was commissioned to carve the first statue of Our Lady of Fatima, showing her Heart as she appeared in June of 1917, and again in 1929. The memorialization also includes a stand of vermillion marble, which was cut from a side altar of the same hospital chapel as the main altar. (\$20,000)

Side Shrine - St. Joseph & Christ Child

Also carved by Mr. Thedim, this five-and-a-half foot statue matches that of Our Lady. Standing on a resized side altar, St. Joseph is shown with Our Lord as he appeared to the Fatima children during the October 13, 1917, apparition. (\$20,000)

Altar Cloths

We need three for the first Mass, but eight for a proper supply. (\$500 each)

Altar Cover

Used to keep the altar cloths clean and protected. (call for price)

Oriental Carpet for the altar steps and foot pace. (\$1600)

Six Saints

When the Brothers and Sisters take their vows, six saints are invoked along with Our Lady and Saint Joseph. Statues of these saints, handcarved in Portugal, will frame the main altar. (\$3200 each)

St. Louis Marie de Montfort

St. Teresa of Jesus (of Avila)

St. Benedict

St. Thérèse of the Child Jesus

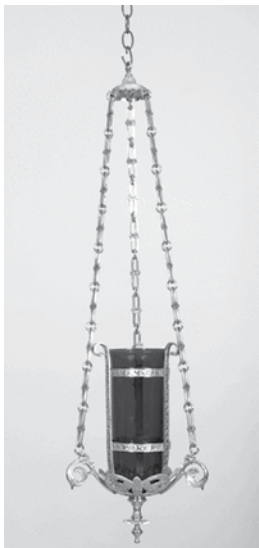
St. John of the Cross

St. Scholastica

Pulpit

We have a beautiful, carved oak pulpit that we hope to resize for the chapel. (\$2500)

The **confessional** will be memorialized in honor of Saint Mary Magdalene. (\$2500)



Hanging **Sanctuary Lamp**
(\$2000)



Altar Cards in Romanesque Brass
Frames (\$1500)



Beautiful Bronze Altar Rail Gates
(European craftsmanship from the 1800s)
(\$2000 each)



Large Gold Ceiling **Stars** (\$500 each)
Medium Gold Ceiling **Stars** (\$250 each)
Small Gold Ceiling **Stars** (\$125 each)

The Infant of Prague
(\$3200)

Large **Pendants Lights**
(8 total)
(\$2000 each)

Three **Hand-painted Angels**
(\$3000 each)

Tester

This is the altar canopy that traditionally should cover every altar where the Blessed Sacrament resides.
(\$5000)

Altar Frontal

The altar represents the Body of Our Lord, and is, therefore, to be fully clothed except during Passiontide. We need a minimum of two frontals: one gold and one purple.
(call for price)



**Sacred Heart
Statue**
(\$15,000)



Pew Frontals (\$500 each) — to be in memory of Father Feeney and Sister Catherine through their patron saints: Saint Leonard of Port Maurice & Saint Catherine of Alexandria

Pews (\$300 each side) — benefactors can choose a saint from select categories

Pew #1	Angels
Pew #2	Patriarchs & Old Testament Saints
Pew #3	Prophets
Pew #4	Apostles
Pew #5	Evangelists
Pew #6	Martyrs (men)
Pew #7	Popes
Pew #8	Bishops

Pew #9	Eastern Doctors
Pew #10	Western Doctors
Pew #11	Confessors (not a martyr or bishop)
Pew #12	Priests & Deacons
Pew #13	Monks & Abbots
Pew #14	Hermits
Pew #15	Virgins
Pew #16	Martyrs (women)
Pew #17	Widows & Holy Women
Pew #18	Visionaries
Pew #19	Royalty (women)
Pew #20	Royalty (men)
Pew #21	Teachers (women)

Pew #22	Teachers (men)
Pew #23	14 Holy Helpers
Pew #24	Missionaries who converted countries
Pew #25	Thaumaturgi
Pew #26	Soldier Saints
Pew #27	Religious Founders
Pew #28	Missionaries Cry Room
Pew #29	Children

Also available: Sedilia & Altar Boys' Chairs